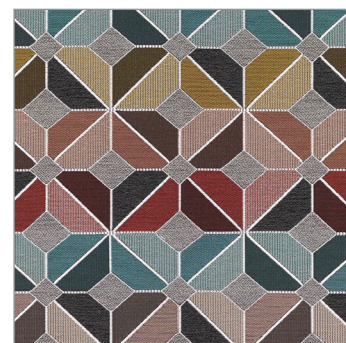


## Cleaning Guide

Pattern:	<b>Talavera</b>
AC#:	<b>63800 - 63810</b>
Content:	<b>85% Polyester, 15% Acrylic</b>
Bleach Cleanable:	<b>May be cleaned with bleach following the proper ratio of 90% water : 10% bleach.</b>
Cleaning Code:	<b>WS</b>



### General Cleaning Recommendation:

Water based cleaning agents and foam may be used for cleaning. This fabric may also be cleaned with mild, water-free solvents.

Cleaning by a professional service is recommended.

*The cleaning recommendations above are a guide to help in the maintenance of Arc-Com textiles. They are supplied without warranty, representation or inducement of any kind, including, but not limited to, the implied warranties of merchantability and fitness for a particular use or purpose. Arc-Com neither guarantees, nor will take any responsibility for, specific results as testing of these products was conducted under laboratory conditions and results may vary under actual conditions. Any misuse of cleansing agents may void the Arc-Com UPHOLSTERY WARRANTY & PERFORMANCE GUARANTEE.*

*Under no circumstances shall Arc-Com be liable for any incidental, consequential, or other damage resulting from negligence, misuse, mishandling or exposure to any of the chemicals used in connection with the cleaning or maintenance of Arc-Com textiles. Information or questions relating to chemicals or cleaning solvents, environmental use, and human exposure should be reviewed with the appropriate vendors or suppliers. Users must read the product specifications and determine appropriateness for specific applications. All label instructions on their use and precautions should be followed.*